

PLACE IDENTITY



Photo by: Dan Freeman

"A sense of place is a **UNIQUE** collection of qualities and characteristics - visual, cultural, social, and environmental - that **PROVIDE MEANING** to a location. Sense of place is what makes one city or town different from another, but sense of place is also what makes our physical surroundings **WORTH CARING ABOUT.**"

- Edward T. McMahon

**INVITING
BEAUTIFUL
MEANINGFUL
ACCESSIBLE
ACTIVE**



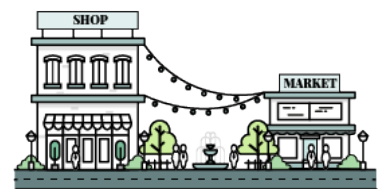
**Analyze Place &
Identify Users**



**Establish Linkages
& Character**



**Public Interest
Increases**



**Identity Boosts
Local Economy**



1



CONNECTION

Providing solid linkages improves the connectivity within a place and also creates a safer environment for pedestrians and bikers to traverse. This can be achieved by improving streetscapes, establishing anchor points and rest stops, between popular spaces and by providing efficient way finding features.



2



CHARACTER

Spaces within Nolanville will be defined through gateways, unique landmarks, as well as material selections and color schemes to signify the character of the place. Celebrated entries encourage visitors to enter a space and participate with the activities and events in the environment around them.



3



ACTIVITY

Creating an Identity also means providing space for multiple active programs to attract visitors as well as opportunities for passive programs to create a comfortable atmosphere. Some examples would be sports fields, exercise stations, parks and green space. Getting people outdoors and active can improve both physical and mental health.



4



OPPORTUNITY

Proposed social programs and events will attract visitors and increase the economic value of properties and businesses within Nolanville. With an increase in events like Farmers Markets, Music Festivals, and Seasonal Events, Nolanville will see an increase in tourism as well as community interaction.



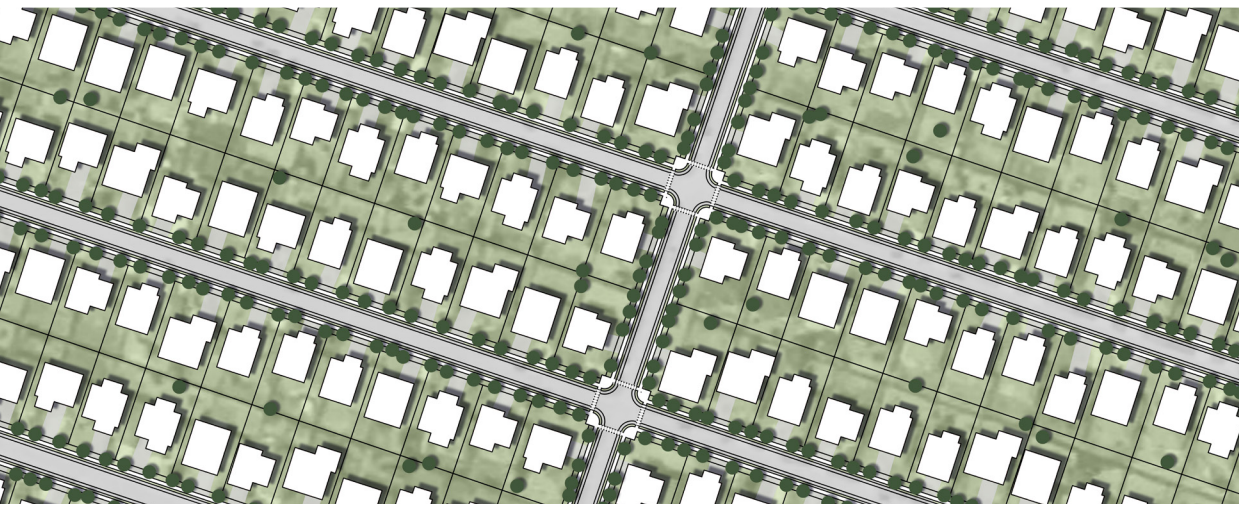
THE RIDGES

OF NOLANVILLE

COMFORT

The Ridges is a fairly-new housing development in Nolanville, Texas. The subdivision consist of mostly single-family housing, but also contains a row of duplexes in the North-West corner of the site. The existing conditions consist of large lots, clean, well-paved streets, and a sufficient drainage system. However, it lacks many crucial elements in order to hold a true "sense of place." The Ridges has very limited vegetation, no unique characteristics, and is not pedestrian/bike friendly.

Using our proposed design program, The Ridges will hold a completely new and improved identity. The place will feel comfortable and inviting with the addition of planting and vegetation, gateways and safer methods of transportation for bikers and pedestrians.



Adding sidewalks, bicycle lanes and crosswalks will improve connectivity and encourage people to get out in the neighborhood.



Four gateways & vegetation will be added to define a clear entry to The Ridges. Uniform street lights & signage will be added throughout to signify the character of the place,



Trails and wayfinding signage will help connect the neighborhood to surrounding features & activities.



Holding programs and events within and around the Ridges will attract visitors and increase the economic value.





CIMARRON PARK ESTATES - GATHERING

Through the implementation of new entry signs and a new entry driveways at both entrances to the neighborhood and the addition of a new state-of-the-art community poolhouse, Cimarron Park Estates will serve as the main hub for gathering and connection for the entire community.

The "Train Side" Community Poolhouse will serve as a great place for community involvement as they can host BBQ's, 4th of July Celebrations, and various other events to bring the community together.



Addition of Community Poolhouse, and two new entrances along Avenue H.



New Corten Steel Entrances to the neighborhood, to give it a rustic contemporary feeling.



Addition of a new Community Poolhouse named "Train Side" to serve a gathering place for the community.



Entrance to the Neighborhood with addition of new materials and plants.



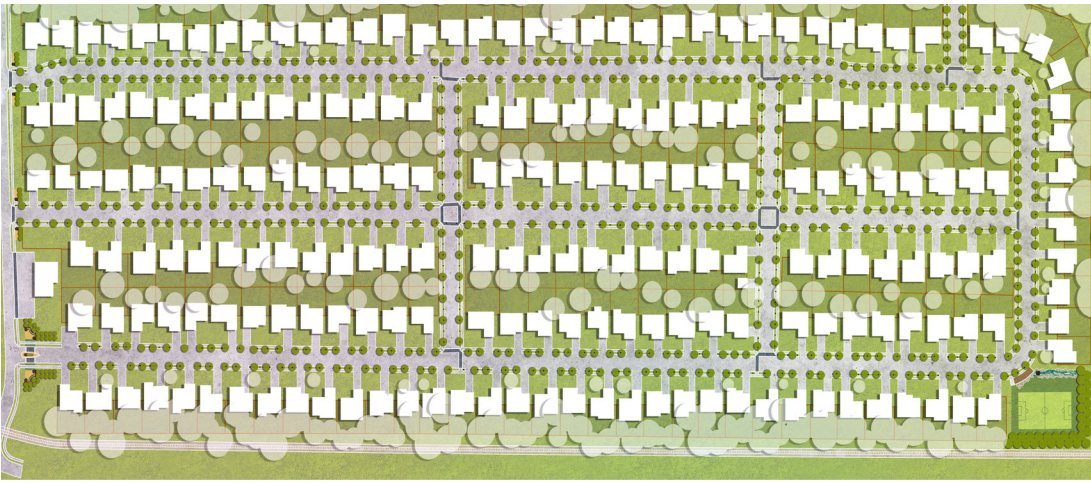
JOHAN CRUZ



CEDAR HEIGHTS

The residential community of Cedar Heights has developed fast and laid the base for establishing an identity for the neighborhood. Through strategic connections, emphasized gateways, proposed green space, and social opportunities, Cedar Heights will become known for its inviting and warm character. By developing the identity within the neighborhood, we can **SPROUT** new opportunities to build relationships and memories for the residents of Cedar Heights. Like the rings in a tree, these residents will continue to grow and eventually become a solid pillar to **SUPPORT** future generations.

**SUPPORT
COMFORT
ATTACHMENT
WARMTH
INTERACTION
RECREATION**



The design will ensure sidewalk connections, provide street trees, and include a solid bike route to promote outdoor activity. A primary gateway is established along Pointer St. with a direct link to the proposed activity detention pond.



With the title of Cedar Heights, it was a simple choice to select cedar materials throughout the design. Street lamps, mail boxes, decking, and the arbor structures will all utilize cedar to continue building the character of the neighborhood.



Open green-space is the perfect opportunity for activity within a community. A detention pond can be converted into a multi-use sports field. During mild weather this space can be used by the community while still fulfilling its intended purpose as a water storage facility.



It is important for a community to interact and build relationships, strengthening the foundations of the community. This open green space can entertain community bbq's, seasonal events, as well music festivals. Spending time outdoors can relieve stress and improve health.

