



RESOLUTION NO. A-16-03 #1

AUTHORIZING STAFF TO INITIATE ANNEXATION PROCEEDINGS

RESOLUTION BY THE CITY COUNCIL OF THE CITY OF NOLANVILLE AUTHORIZING STAFF TO INITIATE AND IMPLEMENT ANNEXATION PROCEEDINGS AS STATUTORILY AUTHORIZED FOR THE ANNEXATION OF CERTAIN AREAS INTO THE CITY LIMITS.

WHEREAS, the City of Nolanville (“City”), Texas is a Home Rule City of the State of Texas; and

WHEREAS, the City Council of the City of Nolanville (“City Council”) seeks to provide for the orderly development of property within the City’s limits and its extraterritorial jurisdiction; and

WHEREAS, the City Council seeks to prepare for future development, straighten the City’s boundaries, and enhance the City’s tax base; and

WHEREAS, pursuant to Texas Local Government Code Chapter 43, the City has annexation authority and seeks to exercise this authority to annex certain areas as statutorily allowed; and

WHEREAS, pursuant to the authority granted by Local Government Code Sec. 43.052(h)(1), the City is interested in annexing several tracts of land adjacent to the City and located in its extraterritorial jurisdiction (“Area”) which contains fewer than 100 separate tracts of land on which one or more residential dwellings are located on each tract, which Area is generally described in a map (Attachment “A”) and in a description (Attachment “B”), attached hereto and made a part hereof for all purposes,

NOW, THEREFORE, BE IT RESOLVED BY THE CITY COUNCIL OF THE CITY OF NOLANVILLE, TEXAS:

SECTION 1. FINDINGS OF FACT

The foregoing recitals are incorporated into this Resolution by reference as findings of fact as if expressly set forth herein.

SECTION 2. EXERCISE OF ANNEXATION AUTHORITY

The City hereby exercises its statutory authority to initiate and implement annexation proceedings by researching the issue of municipal annexation and taking steps toward expanding the city limits by bringing certain adjacent areas into the City.

**SECTION 3. CITY STAFF AUTHORIZED
TO INITIATE ANNEXATION PROCEEDINGS**

The City staff is hereby instructed to initiate annexation proceedings, including but not limited to:

- a. develop a list of possible annexation sites;
- b. develop a municipal service plan featuring proposals for providing services to newly annexed areas;
- c. develop an annexation schedule;
- d. complete other duties as required, and
- e. the City Manager is granted specific authority to, in her reasonable discretion, modify the map (Attachment "A") and a description (Attachment "B") of the proposed area to be annexed, as well as the annexation schedule's timeline, with the advice of legal counsel, in order to accomplish the intent and purposes of the proposed annexation.

SECTION 4. REPEALER

All resolutions, ordinances or parts thereof, that are in conflict or inconsistent with any provision of this Resolution are hereby repealed to the extent of such conflict, and the provisions of this Resolution shall be and remain controlling as to the matters regulated, herein.

SECTION 5. REPEALER

Should any of the clauses, sentences, paragraphs, sections or parts of this Resolution be deemed invalid, unconstitutional, or unenforceable by a court of law or administrative agency with jurisdiction over the matter, such action shall not be construed to affect any other valid portion of this Resolution.

SECTION 6. EFFECTIVE DATE

This Resolution shall become effective upon approval and passage.

SECTION 7. PROPER NOTICE AND MEETING

The meeting at which this Resolution was approved was open to the public as required by the Texas Open Meetings Act, and that notice of the time, place, and subject matter of the meeting was given as required by the Texas Open Meetings Act.

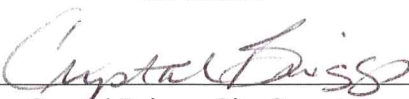
PASSED & APPROVED this, the 3rd day of March, 2016 by a vote of 4 (ayes) to 0 (nays) to 0 (abstentions) of the City Council of Nolanville, Texas.

CITY OF NOLANVILLE, TEXAS:

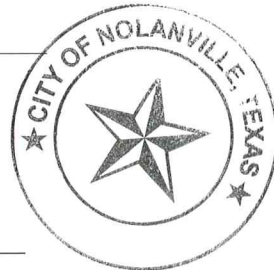
By: 

 David Escobar, Mayor

ATTEST:



 Crystal Briggs, City Secretary

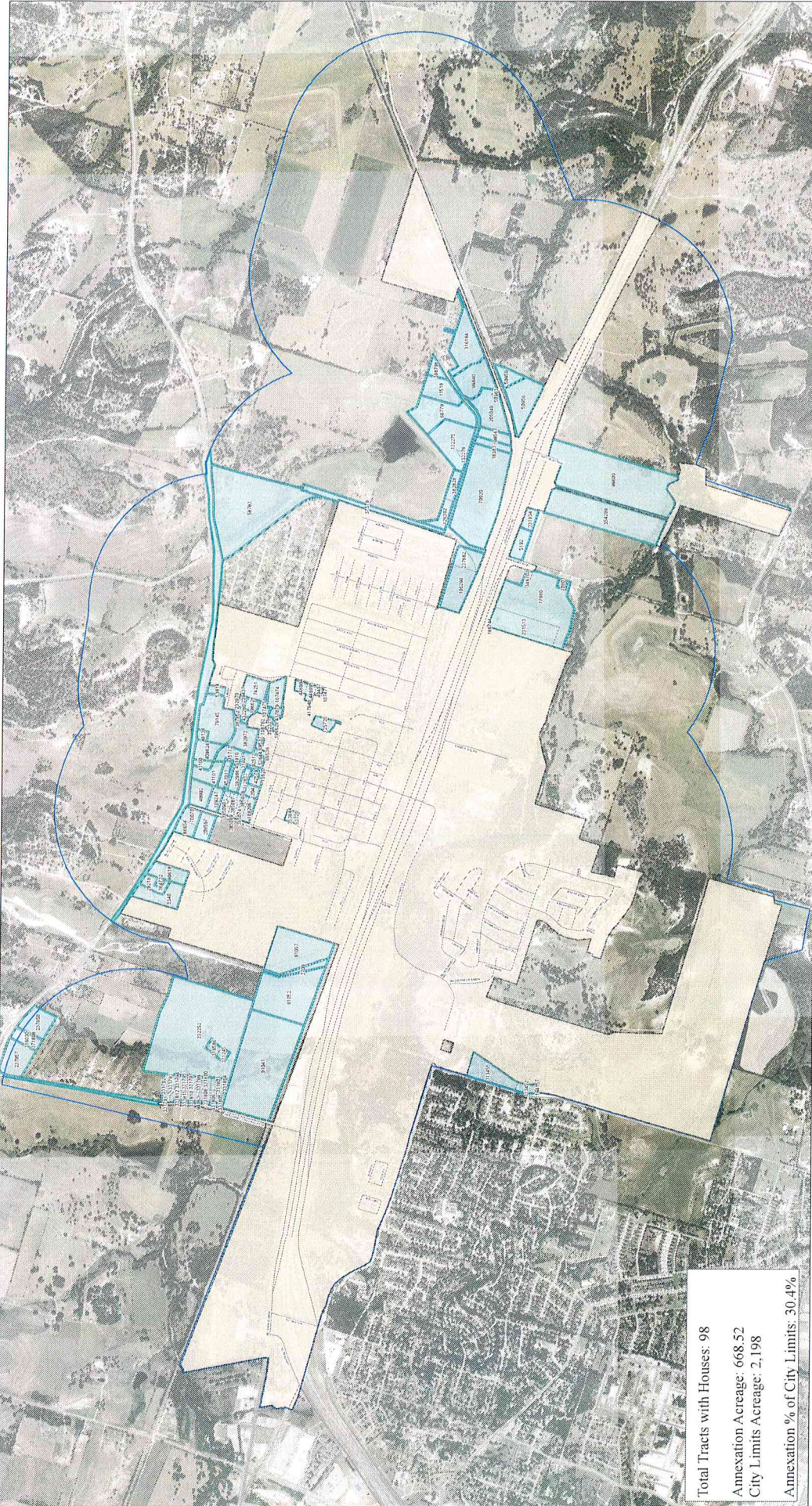


OBJECT ID	PROP ID	ACRES	Legal Description
1	50963	0.34297853	A0379BC J HUGHES, 15-7, ACRES .344
2	194157	0.29092607	A0117BC E BERRY, ACRES 0.279
3	18381	2.48555577	A0379BC J HUGHES, 14 ACRES 2.933
4	132276	0.49700876	A0379BC J HUGHES, 13-2-2-1, ACRES 0.5
5	354299	28.89885367	A0379BC J HUGHES, 19, S OF HWY 190, ACRES 28.9
6	10803	0.70568676	A0247BC A DARNELL, ACRES .702
20	31949	0.17371325	OAKRIDGE, BLOCK 004, LOT PT BLK, (N 57.1' OF E 130' OF BLK)
22	22439	0.08738555	A0185BC J H COX, 7, ACRES .09
29	69536	0.34460085	A0897BC J P WOOD, Z-28, ACRES .34
31	11518	6.91590895	A0379BC J HUGHES, 15-2 ACRES 6.916
36	385088	0.20113902	RYAN ADDITION, BLOCK 001, LOT 0014
37	385080	0.27132652	RYAN ADDITION REPLAT # 1 (LTS 4-12 BLK 1), BLOCK 001, LOT 006A
38	112833	1.68555834	OAKRIDGE, BLOCK 002, ACRES 1.657
48	126392	3.34088639	A0379BC J HUGHES, 13-2-1, ACRES 3.326
52	49902	4.74538083	A0185BC J H COX, 9, Z-2, ACRES 4.45
60	385081	0.2115842	RYAN ADDITION REPLAT # 1 (LTS 4-12 BLK 1), BLOCK 001, LOT 007A
64	385082	0.16969725	RYAN ADDITION REPLAT # 1 (LTS 4-12 BLK 1), BLOCK 001, LOT 008A
65	52720	0.48758465	A0897BC J P WOOD, Z-5, ACRES .5
67	53814	1.41806117	A0185BC J H COX, 3, Z-10, ACRES 2.01
89	446994	2.37704421	A0290BC A L EAVE, Z-11, A0642 D OLDHAM, ACRES 1.094
92	417948	0.43620657	A0290BC A L EAVES, ACRES .436
93	186744	0.04425091	A0247BC A DARNELL, ACRES .045
94	316184	12.55901735	A0379BC J HUGHES, 15, ACRES 12.541
102	198567	3.19993216	A-0379 J HUGHES, 3.200AC
112	113452	1.85284406	A0117BC E BERRY, 2-1, ACRES 1.866
113	52644	0.37881131	A0897BC J P WOOD, Z-29, ACRES .34
117	385089	0.33233104	RYAN ADDITION, BLOCK 001, LOT 0015
118	66779	13.22479307	A0379BC J HUGHES, 13-2, ACRES 14.0
125	396796	2.10213144	A0379BC J HUGHES, ACRES 2.098
129	49497	0.32677135	A0642BC D OLDHAM, ACRES .35
138	385087	0.33379174	RYAN ADDITION, BLOCK 001, LOT 0013
139	385077	0.19978342	RYAN ADDITION, BLOCK 001, LOT 0003
144	382828	2.50006851	A0379BC J HUGHES, 13-2-1, ACRES 2.5
145	70920	36.19926813	A-0379 J HUGHES, 20 37.245AC
152	99600	49.06023475	A0379BC J HUGHES, 19, S OF HWY 190, ACRES 49.63
154	132275	12.45977083	A0379BC J HUGHES, 13-2-2, ACRES 12.401
177	392966	2.78223319	A0897BC J P WOOD, ACRES 2.777
179	58783	45.69645547	A0359BC J GOLLIER, 3, ENHANCED LIFE ESTATE, ACRES 36.756
182	37579	7.08051535	A0379BC J HUGHES, 13-1, ACRES 7.179
188	41101	4.53764494	A0185BC J H COX, 8, ACRES 4.0
189	390045	0.15599472	A0897BC J P WOOD, ACRES .169

OBJECT ID	PROP ID	ACRES	Legal Description
190	69537	0.77521578	A0897BC J P WOOD, Z-30, ACRES .773
			OAKRIDGE, BLOCK 004; LOT PT BLK, (S 118.7' OF E 130' OF BLK), MH LABEL# TEX0014339 SN1 TX33767104A2128; TITLE # 00373539, SN1 TEX014340; TITLE # TEX014339, SN1 TEX014340; TITLE # TEX014339
192	15620	0.36698524	A0897BC J P WOOD, Z-27, ACRES 2.381
196	92512	2.43682348	A0897BC J P WOOD, ACRES .235
197	232970	0.23252572	A0897BC J P WOOD, ACRES .235
198	107474	3.87536906	A0804BC J P SUTTON, 1-1, ACRES 4.014
200	385079	0.41666157	RYAN ADDITION REPLAT # 1 (LTS 4-12 BLK 1), BLOCK 001, LOT 005A
201	451911	1.98646101	A0897BC J P WOOD, ACRES 2.25
202	385086	0.17605147	RYAN ADDITION REPLAT # 1 (LTS 4-12 BLK 1), BLOCK 001, LOT 012A
203	385085	0.28346646	RYAN ADDITION REPLAT # 1 (LTS 4-12 BLK 1), BLOCK 001, LOT 011A
204	196628	0.3257846	A0897BC J P WOOD, ACRES .325
205	385078	0.24736307	RYAN ADDITION REPLAT # 1 (LTS 4-12 BLK 1), BLOCK 001, LOT 004A
206	390048	0.15197699	A0897BC J P WOOD, ACRES .118
208	385074	0.33953105	RYAN ADDITION, BLOCK 001, LOT 0001
			HENDRICKS DEVELOPMENT ADDITION, BLOCK 001, LOT 0001, ACRES 2.5
209	331934	2.50864009	
210	237662	2.99990997	A0247BC A DARNELL, 1-1, Z-22 ACRES 3.0
212	385076	0.20144087	RYAN ADDITION, BLOCK 001, LOT 0002
213	385083	0.29760527	RYAN ADDITION REPLAT # 1 (LTS 4-12 BLK 1), BLOCK 001, LOT 009A
215	41100	1.37170349	A0185BC J H COX, 6, Z-4, ACRES 1.03
216	408624	4.04426642	A0185BC J H COX, 6, Z-4, ACRES 3.35
217	48138	0.98166273	A0185BC J H COX, 5-1, Z-6, ACRES 1.0
218	109247	2.52237126	A0897BC J P WOOD, Z-1, ACRES 2.5
220	12042	1.61648816	OAKRIDGE, BLOCK 003, LOT ALL, ACRES .059
221	385090	0.8910791	RYAN ADDITION, BLOCK 001, LOT 0016
222	31921	0.15525627	A0185BC J H COX, ACRES .155
223	15713	3.02884401	A0897BC J P WOOD, ACRES 2.645
224	188296	1.96520496	A0897BC J P WOOD, ACRES 1.959
226	5192	3.98564115	A0379BC J HUGHES, 20-1 ACRES 4.187
231	125720	2.50216712	A0897BC J P WOOD, Z-67-1, ACRES 2.502
233	346702	1.00370513	A0247BC A DARNELL, 1-3, ACRES 1.0
234	231513	12.9550406	A0247BC A DARNELL, ACRES 12.955
235	77980	27.46347191	A0247BC A DARNELL, 1-3, ACRES 27.529
238	42579	1.10172146	OAKRIDGE, BLOCK 004, LOT PT BLK, (4, LESS E 130')
239	205049	9.78809691	A0379BC J HUGHES, ACRES 9.932
240	50959	3.19319124	A0379BC J HUGHES, 15-6, ACRES 3.11
241	331799	0.53047253	DIANA ADDITION, BLOCK 001, LOT 014A, ACRES .522
243	331245	0.99954535	A0193BC F T COX, 8, ACRES 1.0
245	331810	0.51457591	DIANA ADDITION, BLOCK 001, LOT 025A, ACRES .523

OBJECT ID	PROP ID	ACRES	Legal Description
246	186654	2.4099245	A0769BC I SCHRIVER, ACRES 2.771
247	3709	2.53735251	A0171BC S CHAIRES, 1-2, RAIL ROAD FRANKLIN INDUSTRIES INC, ACRES 1.614
248	331804	0.51789796	DIANA ADDITION, BLOCK 001, LOT 019A, ACRES .522
250	331809	0.51356701	DIANA ADDITION, BLOCK 001, LOT 024A, ACRES .523
251	331808	0.53085464	DIANA ADDITION, BLOCK 001, LOT 023A, ACRES .523
253	331800	0.52521462	DIANA ADDITION, BLOCK 001, LOT 015A, ACRES .522
254	316030	2.95993438	A0193BC F T COX, 7-1, ACRES 2.735
255	331802	0.51801416	DIANA ADDITION, BLOCK 001, LOT 017A, ACRES .522
256	91057	18.86019476	A0171BC S CHAIRES, N OF 190, LIFE ESTATE, ACRES 18.081
257	331793	0.68343654	DIANA ADDITION, BLOCK 001, LOT 008A, ACRES .67
258	331796	0.51808317	DIANA ADDITION, BLOCK 001, LOT 011A, ACRES .522
259	237957	8.17767639	A0193BC F T COX, VLB C/S 780-156305, ACRES 8.205
260	331805	0.51140363	DIANA ADDITION, BLOCK 001, LOT 020A, ACRES .513
261	208597	3.91211304	A0769BC I SCHRIVER, ACRES 3.92, SN1 HOTX08808482A; LABEL# NTA0828758, TITLE # CN002627
262	331811	0.5161469	DIANA ADDITION, BLOCK 001, LOT 026A, ACRES .523
263	331791	0.54386939	DIANA ADDITION, BLOCK 001, LOT 006A, ACRES .527
264	94063	5.74612892	A0193BC F T COX, 10, CEMETERY ROAD, ACRES 6.33
265	99840	9.56227677	A0379BC J HUGHES, 15, ACRES 9.355
266	331801	0.52435928	DIANA ADDITION, BLOCK 001, LOT 016A, ACRES .522
267	91047	48.61303324	A0171BC S CHAIRES, 1-1, Z-5 & 7; LIFE ESTATE, ACRES 47.77
268	331803	0.52908806	DIANA ADDITION, BLOCK 001, LOT 018A, ACRES .522
269	331794	0.66316839	DIANA ADDITION, BLOCK 001, LOT 009A, ACRES .678
270	232971	0.23186637	A0897BC J P WOOD, ACRES .235
271	387852	0.4141431	A0897BC J P WOOD, ACRES .388, SN1 TXFL812A01195WP11; LABEL# PFS1046585
272	29218	2.68136259	A0289BC A L EAVES, 1-3-1, ACRES 2.66
273	90618	5.11542102	A0289BC A L EAVES, 1-1 & A-0769 I SHRIVER, 2-1, VLB C/S # 922-162771 ACRES 5.079
276	331792	0.68295037	DIANA ADDITION, BLOCK 001, LOT 007A, ACRES 0.687
278	331806	0.52343511	DIANA ADDITION, BLOCK 001, LOT 021A, ACRES .523
280	371808	0.50293941	A0193BC F T COX, ACRES .733
283	232252	69.477911	A0193BC F T COX, 8, ACRES 69.099
288	70070	2.37547227	A0769BC I SCHRIVER, 3-1, ACRES 2.039
289	91052	24.24901658	A0171BC S CHAIRES, 1, N OF 190; Z 10, 11 & 16, LIFE ESTATE, ACRES 25.684
290	331798	0.51863563	DIANA ADDITION, BLOCK 001, LOT 013A, ACRES .522
291	353844	0.81344674	A0897BC J P WOOD, Z-3, ACRES .8
292	5340	7.01404982	A0289BC A L EAVE, 1-3, ACRES 7.005

OBJECT ID	PROP ID	ACRES	Legal Description
294	417879	1.02068849	A0897BC J P WOOD, ACRES 1.024
295	331797	0.51902235	DIANA ADDITION, BLOCK 001, LOT 012A, ACRES .522
296	316586	1.05773989	A0193BC F T COX, 8, ACRES 1.06
297	108762	0.12243884	A0897BC J P WOOD, Z-66, ACRES .124
298	352321	0.27686889	A0897BC J P WOOD, ACRES .315
300	331813	0.49215504	DIANA ADDITION, BLOCK 001, LOT 028A, ACRES .517
303	364732	0.49643776	A0289BC A L EAVES, 1-3-1, ACRES .5
305	107475	1.14319975	A0897BC J P WOOD, Z-67, ACRES 1.0
306	382973	5.74028982	A0897BC J P WOOD, Z-68, ACRES 5.878
307	331807	0.51910844	DIANA ADDITION, BLOCK 001, LOT 022A, ACRES .523
311	79145	12.62173737	A0185BC J H COX, 4, Z-8, ACRES 11.45
312	239437	0.27941978	A0897BC J P WOOD, ACRES .277
313	196626	1.39845812	A0897BC J P WOOD, ACRES 1.311
314	432260	1.27540466	A0897BC J P WOOD, ACRES 1.204
			OAKRIDGE, BLOCK 004, LOT PT BLK, (N 101.30' OF S 220' OF E 130' OF BLK), ACRES .299, MH LABEL# TEX0377897 SN1 TXFL2AF498404464;
			TITLE # 00359541
331	15619	0.28421613	
332	385084	0.23285348	RYAN ADDITION REPLAT # 1 (LTS 4-12 BLK 1), BLOCK 001, LOT 010A
332	74251	4.66947766	A0804BC J P SUTTON, 1, ACRES 4.669
333	50956	11.03133363	A0379BC J HUGHES, 15-3, ACRES 11.0
334	331795	0.52991589	DIANA ADDITION, BLOCK 001, LOT 010A, ACRES .523
335	331812	0.50667846	DIANA ADDITION, BLOCK 001, LOT 027A, ACRES .522
337	237958	6.47891091	A0193BC F T COX, 7-1, ACRES 6.498
338	196627	0.35836702	A0897BC J P WOOD, ACRES .338
339	107471	2.37704421	A0290BC A L EAVE, Z-11, A0642 D OLDHAM, ACRES 0.279
340	446995	2.37704421	A0290BC A L EAVES, Z-11, A0642 D OLDHAM, ACRES 0.885
341	451910	1.98646101	A0897BC J P WOOD, LIFE ESTATE, ACRES 0.5
343	37578	13.397	A0247BC A DARNELL, 1-1, Z-22 ACRES 13.397



Total Tracts with Houses: 98
 Annexation Acreage: 668.52
 City Limits Acreage: 2,198
 Annexation % of City Limits: 30.4%

- Legend**
- City Limits
 - ETJ
 - 2016 Annexation
 - Parcels

City of Nolanville, TX Proposed Annexation March 2016



Sources of Data: CTCOG, Bell CAD, TNRIS
 Disclaimer: This map is for illustrative purposes only. The Bojorquez Law Firm disclaims all liability.